

# MISSION BAY CORPORATE PARK

5000-319

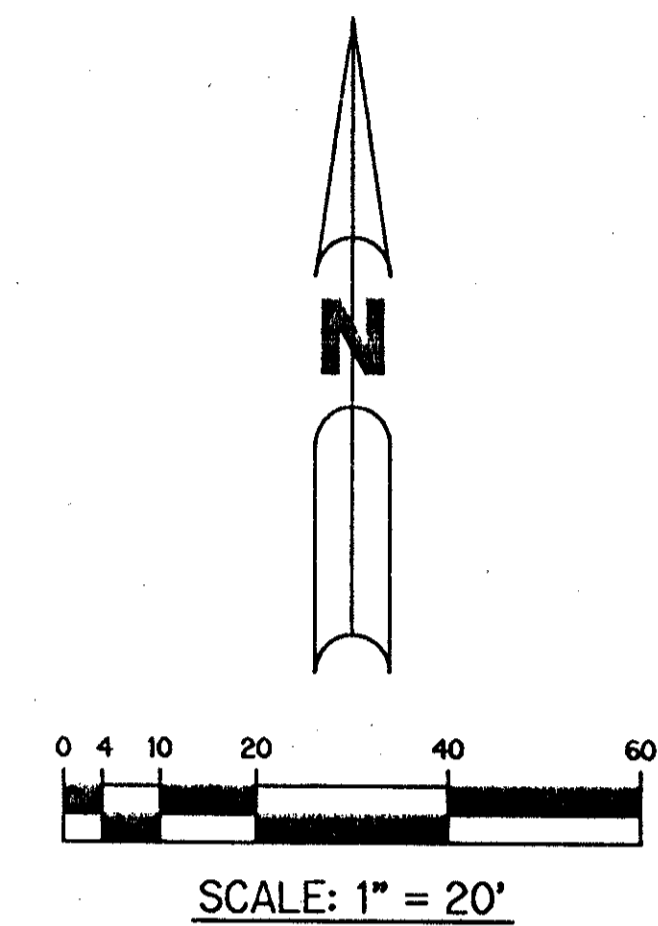
135

ALL OF MISSION BAY - TRACT "O" AS RECORDED IN PLAT BOOK 59, PAGES 196 AND 197, TOGETHER WITH A PORTION OF TRACT "P" OF MISSION BAY AS RECORDED IN PLAT BOOK 53, PAGES 112-120, ALL IN THE PUBLIC RECORDS OF PALM BEACH COUNTY, FLORIDA, AND LYING IN SECTION 13, TOWNSHIP 47 SOUTH, RANGE 41 EAST, PALM BEACH COUNTY, FLORIDA.

SHEET 3 OF 3 MARCH, 1997

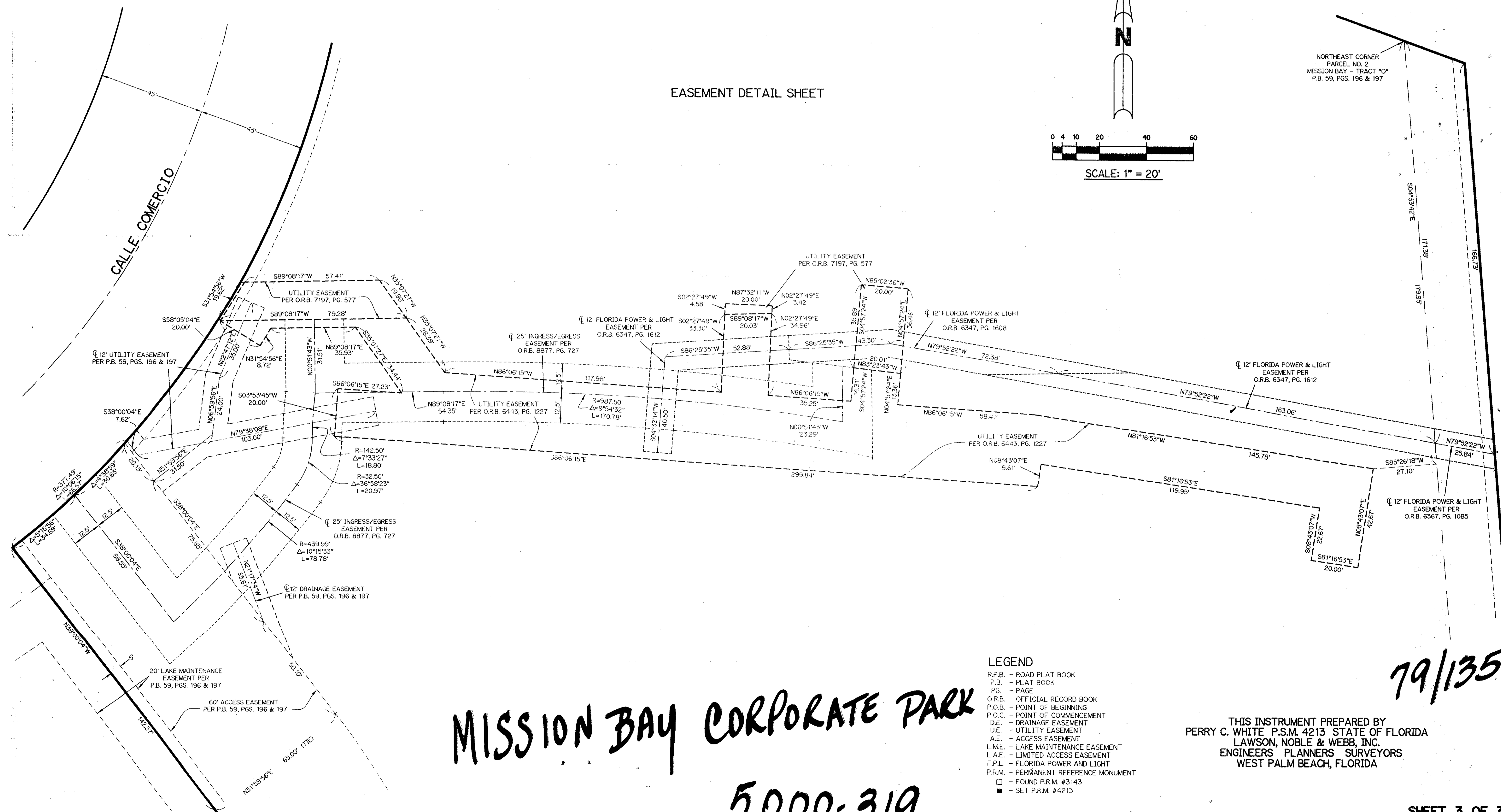
*Pet. 96-07  
ALOC. #0001  
5/3/3/M*

## EASEMENT DETAIL SHEET



NORTHEAST CORNER  
PARCEL NO. 2  
MISSION BAY - TRACT "O"  
P.B. 59, PGS. 196 & 197

SUBDIVISION \*MISSION BAY CORPORATE PARK  
BOOK 79 FLOOD MAP # 100 B  
PAGE 135 ZONING R.T.S.  
QUAD \* 67 ZIP CODE 33498  
SE 24-95  
PUD NAME ALL OF MISSION BAY TRACT "O"



**MISSION BAY CORPORATE PARK**

5000-319

- LEGEND**
- R.P.B. - ROAD PLAT BOOK
  - P.B. - PLAT BOOK
  - PG. - PAGE
  - O.R.B. - OFFICIAL RECORD BOOK
  - P.O.B. - POINT OF BEGINNING
  - P.O.C. - POINT OF COMMENCEMENT
  - D.E. - DRAINAGE EASEMENT
  - U.E. - UTILITY EASEMENT
  - A.E. - ACCESS EASEMENT
  - L.M.E. - LAKE MAINTENANCE EASEMENT
  - L.A.E. - LIMITED ACCESS EASEMENT
  - F.P.L. - FLORIDA POWER AND LIGHT
  - P.R.M. - PERMANENT REFERENCE MONUMENT
  - - FOUND P.R.M. #3143
  - - SET P.R.M. #4213

THIS INSTRUMENT PREPARED BY  
PERRY C. WHITE P.S.M. 4213 STATE OF FLORIDA  
LAWSON, NOBLE & WEBB, INC.  
ENGINEERS PLANNERS SURVEYORS  
WEST PALM BEACH, FLORIDA

79/135